



SPACE

FRAGRANCES



# ABOUT SPACE



Space is the final sensory frontier.

Space Scenting combines over 10 years of experience in scent marketing, providing superior fragrances and diffuser technologies to hotels, brands and retailers.

**Claim your space.**

# FRESH

BAMBOO ZEST  
BERGAMOT BOOST  
FRESH ELEMENTAL  
LE LAVO  
ORION PEAK

# BAMBOO ZEST

**FRESH**

**FAMILY**  
Citrus Floral

**TOP**

Bergamot, Lemon zest, Lime, Fresh

**MIDDLE**

Geranium, Red Rose, White Jasmine,  
Lily of the Valley

**BASE**

Woody, Musky

## **DESCRIPTION**

---

Zesty citrus top notes are supported by a white jasmine and red rose floralcy.





# BERGAMOT BOOST

**FRESH**

**FAMILY**

Aromatic Woody

**TOP**

Fresh, Aromatic, Citrus

**MIDDLE**

Green, Spicy, Resinous

**BASE**

Woody, Leathery, Amber

## **DESCRIPTION**

---

Lavender and rosemary herbs rejuvenate the mind and body, with characteristics of sandalwood and patchouli and a dash of cinnamon.

# FRESH ELEMENTAL

**FRESH**

**FAMILY**

Aromatic Floral

**TOP**

Citrus, Agrestic, Spicy

**MIDDLE**

White Floral, Woody

**BASE**

Woody, Amber, Musk

## **DESCRIPTION**

---

Wild-grown spices and white flowers splashed with lemon peel conjures fresh retreat.





# LE LAVO

**FRESH**

**FAMILY**

Aromatic Floral

**TOP**

Aromatic, Fresh

**MIDDLE**

Floral, Green, Spicy

**BASE**

Woody

## **DESCRIPTION**

---

Chamomile and lavender introduce this composition which is also appointed with aspects of crushed spices and precious woods.

# ORION PEAK

**FRESH**

**FAMILY**

Aromatic Woody

**TOP**

Citrus, Aquatic, Aromatic

**MIDDLE**

Floral, Green

**BASE**

Woody, Leather

## **DESCRIPTION**

---

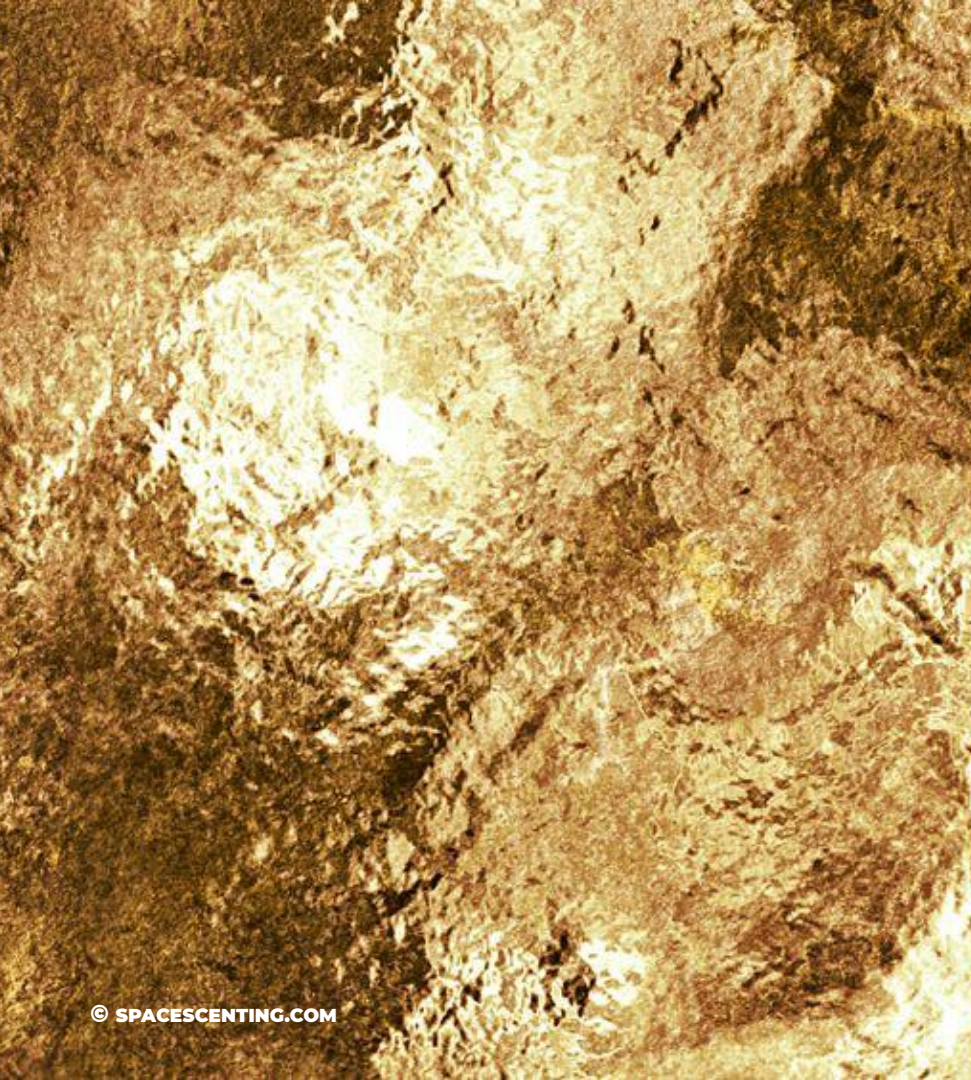
Aromatic rosemary marks this composition with a timeless base of leather, cedarwood and vetiver.





# GOURMAND

HUNTER'S MOON  
COLA LOLA  
NIGHT ORCHID  
ROASTED OAK BALSAM  
SUN DRENCHED FIG



# HUNTER'S MOON

**GOURMAND**

**FAMILY**

Aromatic Woody

**TOP**

Citrus, Aromatic

**MIDDLE**

Green, Spicy, Balsamic

**BASE**

Woody, Musky

## **DESCRIPTION**

---

Grapefruit and ginger blend with green herbs on a warm woods and musk base

# COLA LOLA

**GOURMAND**

**FAMILY**

Citrus Gourmand

**TOP**

Lime, Lemon, Orange

**MIDDLE**

Cinnamon, Coriander, Nutmeg

**BASE**

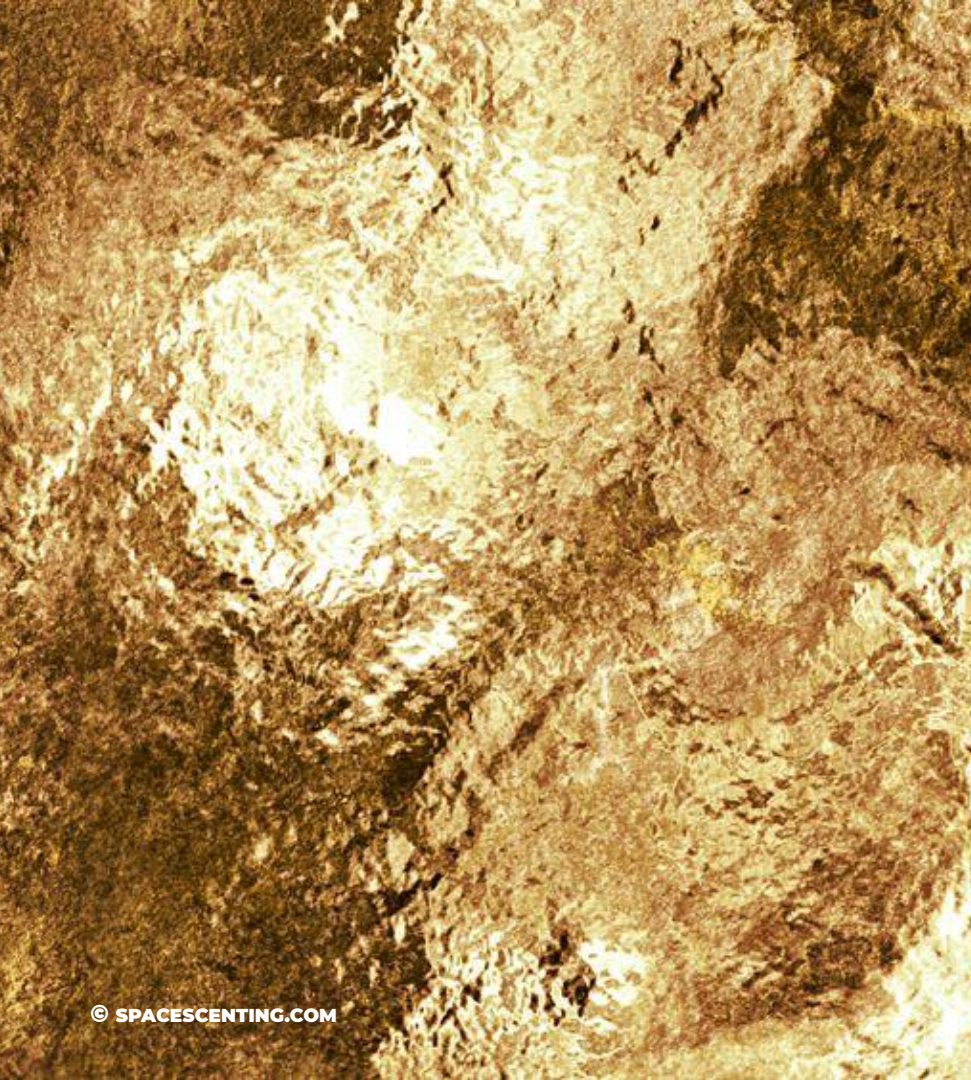
Vanilla

## **DESCRIPTION**

---

Everyone's favourite fizzy pop! Effervescent citrus notes combine with characteristic spices of cinnamon and nutmeg over a warm vanilla base.





# NIGHT ORCHID

**GOURMAND**

**FAMILY**

Gourmand Floral

**TOP**

Raspberry, Orange Flower

**MIDDLE**

Jasmine, Heliotrope

**BASE**

Cashmere, Honey, Patchouli

## **DESCRIPTION**

---

A generous dose of cashmere and honey is presented with a kiss of raspberry and orange flower. Facets of heliotrope and patchouli round out this unforgettable experience.

# ROASTED OAK BALSAM

**GOURMAND**

**FAMILY**  
Woody Spicy

**TOP**

Mandarin, Fresh Green

**MIDDLE**

Roasted Oak, Spicy Clove

**BASE**

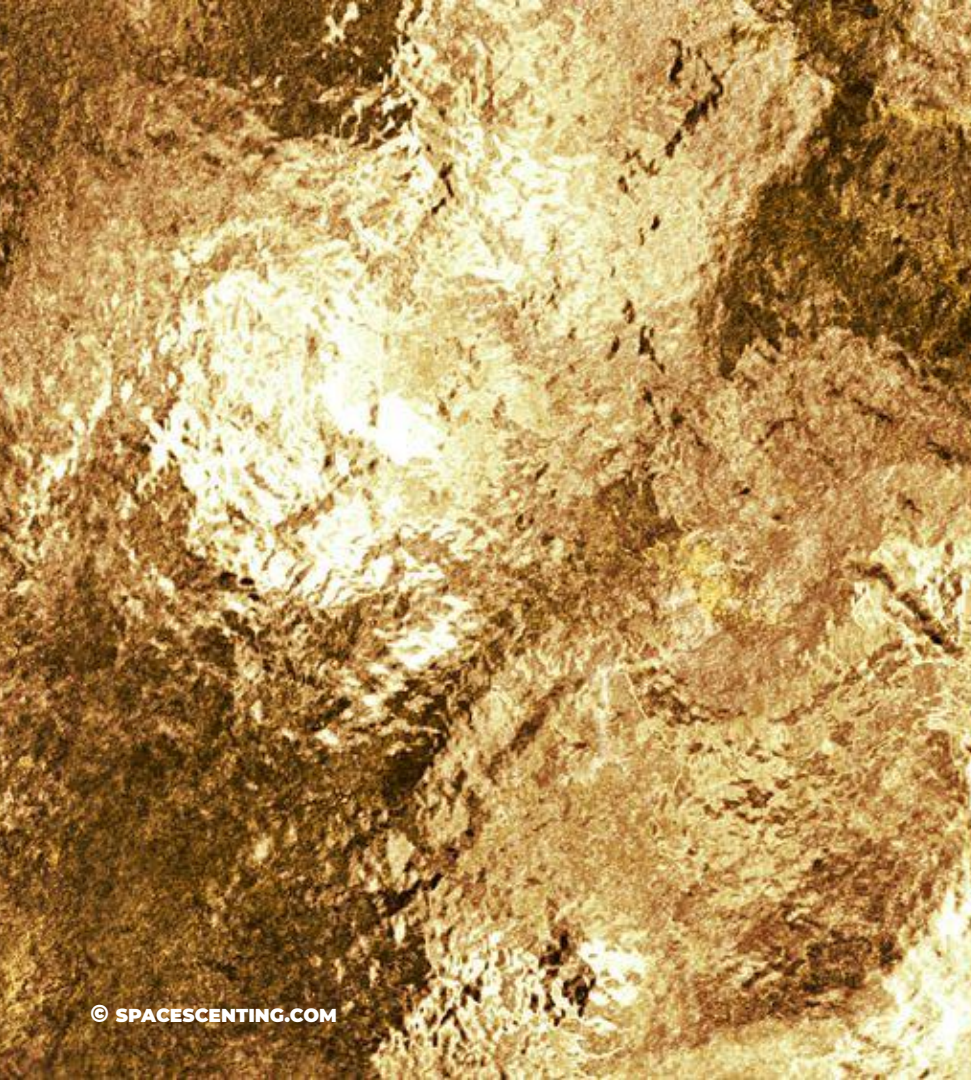
Sweet Amber, Balsamic, Sandalwood

## **DESCRIPTION**

---

Roasted oak combine with sweet balsamic woods, featuring spiced clove and amber resin.





# SUN DRENCHED FIG

**GOURMAND**

**FAMILY**  
Fruity Woody

**TOP**

Green Florals, Fig

**MIDDLE**

Marine Notes

**BASE**

Sandalwood

## **DESCRIPTION**

---

Rich and ripened fig characterises this composition with facets of water and sandalwood.

# GREEN

VALLEY RISE  
RYOKU  
TEA FLOWERS  
FLORAL FOUGERE

# VALLEY RISE

**GREEN**

**FAMILY**

Citrus Green

**TOP**

Citrus, Fresh, Aromatic

**MIDDLE**

Spicy, Green, Tea, Floral

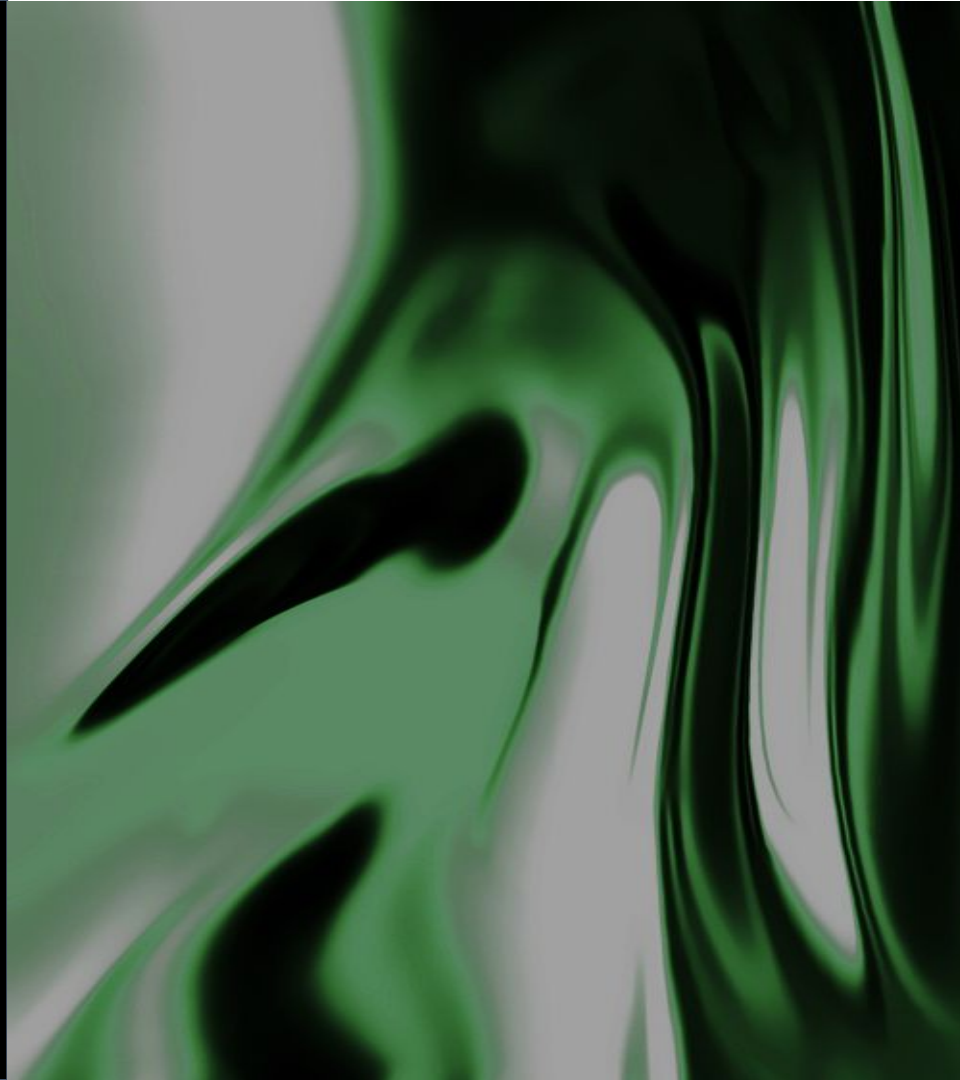
**BASE**

Woody, Ambery

## DESCRIPTION

---

Rose and lily of the valley bring balance to this composition, with characteristics of nutmeg, amber and tea.







# RYOKU

**GREEN**

**FAMILY**

Floral Green

**TOP**

Kaffir Lime, Lemon, Bergamot,  
Pink Grapefruit

**MIDDLE**

Green Tea, Jasmine, Magnolia,  
Green Cardamom, Rose

**BASE**

White Musk, Blond Wood, Ambery

## **DESCRIPTION**

---

Sparkling green tea notes accented with bergamot and lime supported with comforting blond woods and white musk.

# TEA FLOWERS

**GREEN**

**FAMILY**

Floral Spicy

**TOP**

Ginger, Grapefruit, Lemon

**MIDDLE**

Tea, Violet, Jasmine

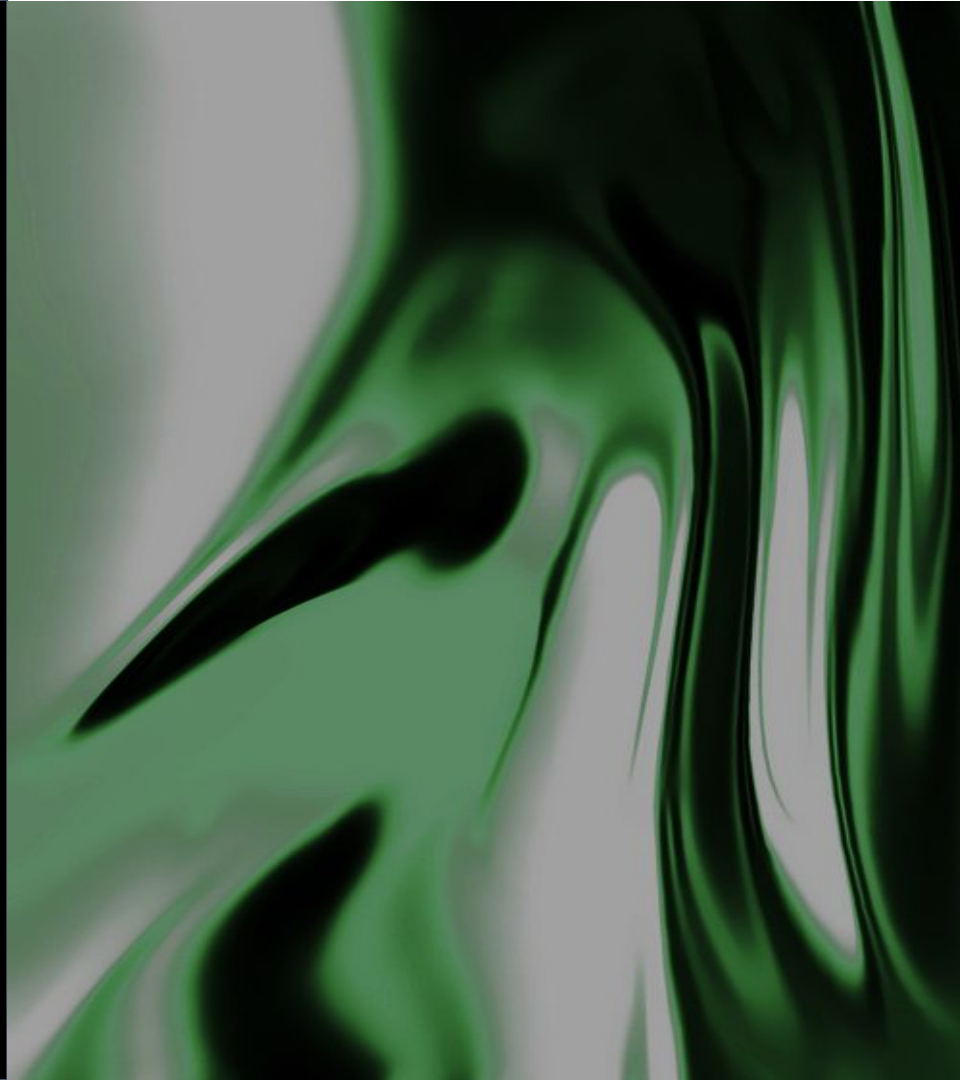
**BASE**

Amber, Musk

## DESCRIPTION

---

An opening of zesty ginger gives way to a heart of violet, tea and jasmine; over an amber musk base.





# FLORAL FOUGERE

**GREEN**

**FAMILY**  
Floral Fougere

**TOP**

Floral, Aromatic

**MIDDLE**

Green, Powdery

**BASE**

Woody

## **DESCRIPTION**

---

Powdered tuberose, ylang and freesia bring together a green bouquet which is rounded out with precious woods.

# LUXE

BERGAMOT & SUEDE  
DESERT SKY  
SOLAR ACCORDS  
VIOLET PEPPER  
WHITE MUSK NEROLI  
WHITE TEA & PEAR

# BERGAMOT & SUEDE

LUXE

FAMILY

Woody Amber

**TOP**

Lemon, Bergamot, Floral

**MIDDLE**

Rose, Jasmine, Suede

**BASE**

Leather, Musky, Dark Amber, Woody

## DESCRIPTION

---

Rich suede and leather punctuate this luxurious presentation, with facets of bergamot, rose and dark amber.

# DESERT SKY

**LUXE**

**FAMILY**

Citrus Woody

**TOP**

Pepper, Elemi, Bergamot, Grapefruit

**MIDDLE**

Geranium, Lavender

**BASE**

Patchouli, Vetiver, Ambroxan,  
Cedarwood

## DESCRIPTION

---

Bright elemi and pepper bubble over a calm and steady heart of geranium and lavender. A complex woody base of vetiver, patchouli and cedarwood ensures this moment will not be forgotten.

# SOLAR ACCORDS

LUXE

FAMILY  
Floral

## TOP

Fresh Aqueous Accords,  
Juicy Raspberry

## MIDDLE

Pink Peony, Red Roses, Solar Accords

## BASE

Sensual Amber, Soft Cream, Musk

## DESCRIPTION

---

Transparent marine notes blend with vibrant berries, pink peony and red roses over a creamy musk base.

# VIOLET PEPPER

**LUXE**

**FAMILY**

Woody Spicy

**TOP**

Cardamom, Mandarin, Neroli

**MIDDLE**

Geranium, Iris, Violet, Pepper

**BASE**

Patchouli, Cedarwood, Amber

## DESCRIPTION

---

Opulent as it is elegant, this brave union of cardamom, iris and pepper is a cut above. Facets of neroli, violet and geranium decorate the composition which is rounded out by a base of patchouli, cedarwood and amber.



# WHITE MUSK NEROLI

LUXE

FAMILY

Citrus Aromatic

**TOP**

Citrus Accords, Mandarin, Aromatic

**MIDDLE**

Coriander, Jasmine, White Narcissus,  
Neroli

**BASE**

Cedarwood, Patchouli, White Musk

## DESCRIPTION

---

Blooming neroli and narcissus anchor this aromatic medley to a base of patchouli and white musk.

# WHITE TEA & PEAR

**LUXE**

**FAMILY**

Floral Musky

**TOP**

Green Bamboo, Nashi Pear

**MIDDLE**

Lotus Blossom, White Tea

**BASE**

Elegant Musk, Guaiac Wood,  
Warm Moss

## DESCRIPTION

---

Nashi pear and lotus blossom, together with an elegant ensemble of musk, guaiac wood and moss bring life to this complex white tea blend.

An aerial photograph of the ocean's surface, showing intricate patterns of white foam and dark blue-green water. The waves are small and numerous, creating a textured, almost cellular appearance. The lighting is bright, highlighting the white foam against the darker water.

# OCEANS

AQUILA  
MANDARIN COVE  
SEA MINERAL  
YUZU OCEAN

# AQUILA

**OCEANS**

**FAMILY**

Citrus Aromatic

**TOP**

Citrus, Fresh, Tea

**MIDDLE**

Green, Spicy, Aquatic, Minty

**BASE**

Woody

## **DESCRIPTION**

---

A cool ocean breeze with facets of eucalyptus, orange peel and vetiver root.





# MANDARIN COVE

OCEANS

FAMILY

Aquatic Aromatic

TOP

Grapefruit, Mandarin

MIDDLE

Juniper Berry, Marine, Lavender

BASE

Cedarwood, Musk

## DESCRIPTION

---

Clear blue skies reflect over gentle waters, a perfect time to set sail over a strong foundation of cedarwood and musk.

# SEA MINERAL

OCEANS

FAMILY

Citrus Aromatic

TOP

Bergamot, Grapefruit, Ambrette Seed

MIDDLE

Sea Salt Note, Dry Fig, Mineral Accord

BASE

Guaiac Wood, Sage, White Musk,  
Driftwood

## DESCRIPTION

---

A comforting medley of citrus and herbs over a warm and gentle base of driftwood and musk.





# YUZU OCEAN

**OCEANS**

**FAMILY**  
Citrus Aquatic

**TOP**

Yuzu, Grapefruit, Pink Pepper

**MIDDLE**

Marine Accord, Violet Leaf, Lavender

**BASE**

Dry Amber, Woody Notes

## **DESCRIPTION**

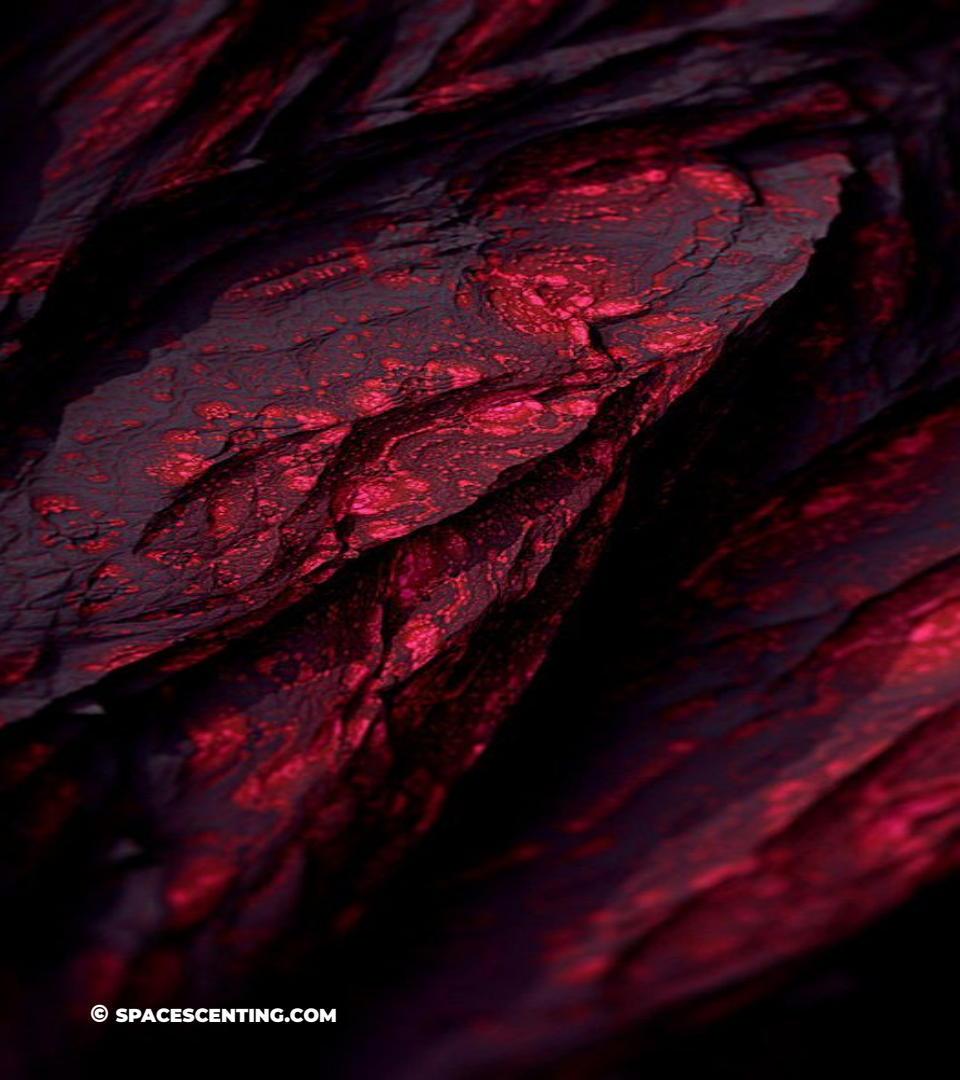
---

Opening with notes of yuzu, grapefruit and pink pepper, this delicate composition is expressed through a heart of lavender and violet leaf drying down into amber woods.

# RESERVE RANGE

GREEN APPLE MUNCHER  
OH JAVIER  
PINEAPPLE MOUSSE  
THE WORLD'S GREATEST LOVER





# GREEN APPLE MUNCHER

**RESERVE  
RANGE**

**FAMILY**  
Woody Aquatic

**TOP**

Fruity, Apple, Green

**MIDDLE**

Floral

**BASE**

Amber, Musk

## **DESCRIPTION**

---

Energetic fruity green apple over a premium foundation of amber and musk.

# OH JAVIER

**RESERVE  
RANGE**

**FAMILY**  
Aromatic Aquatic

**TOP**

Lemon, Mandarin, Lavender

**MIDDLE**

Marine, Transparent Floral, Galbanium

**BASE**

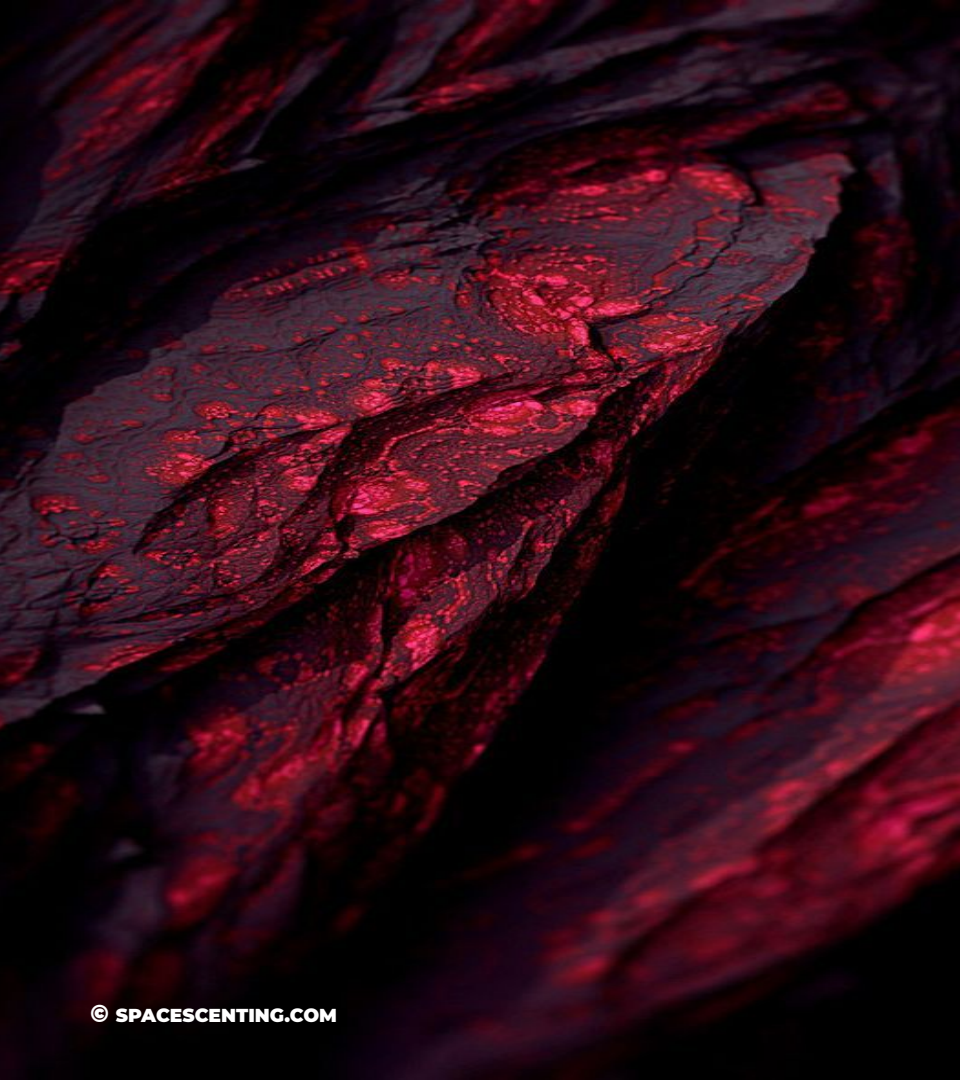
Cedarwood, Patchouli, Amber

## DESCRIPTION

---

Timeless quality and craft presents a delicately balanced composition of earth and sea, holding facets of mandarin, galbanum and patchouli.





# PINEAPPLE MOUSSE

**RESERVE  
RANGE**

**FAMILY**  
Aromatic Fougere

**TOP**

Bergamot, Lavandin, Pineapple

**MIDDLE**

Rosemary, Violet, Orange/Grapefruit

**BASE**

Cedarwood, Mousse, Tonka Bean,  
Vetiver

## **DESCRIPTION**

---

Pineapple and grapefruit invite playful sophistication through a violet heart, set over a base of tonka bean and vetiver.

# THE WORLD'S GREATEST LOVER

**RESERVE  
RANGE**

**FAMILY**  
Woody Oriental

**TOP**

Aromatic, Citrus

**MIDDLE**

Fresh/Aromatic, Woody, Nutty

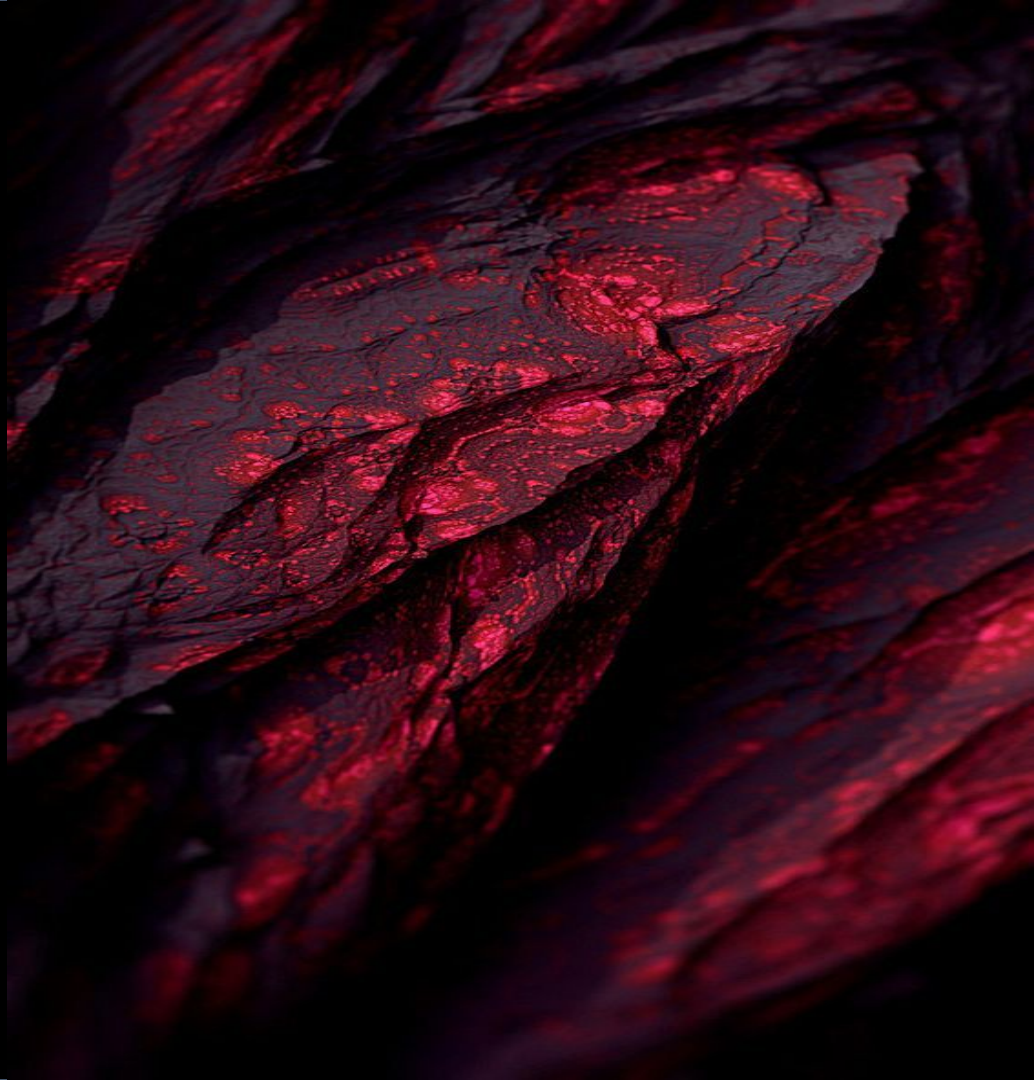
**BASE**

Amber, Musk

## DESCRIPTION

---

Grapefruit and ginger blend wiith green herbs on a warm woods and musk base.



# VITALITY

BITTER ORANGE

GINGER FIELDS

GOOD VIBES

LEMON GROVE

PACIFIC WOODS

# BITTER ORANGE

**VITALITY**

**FAMILY**

Green Spicy

**TOP**

Pink Pepper, Redcurrant Berries,  
Bitter Orange

**MIDDLE**

Violet, Tea, Jasmine, Peony

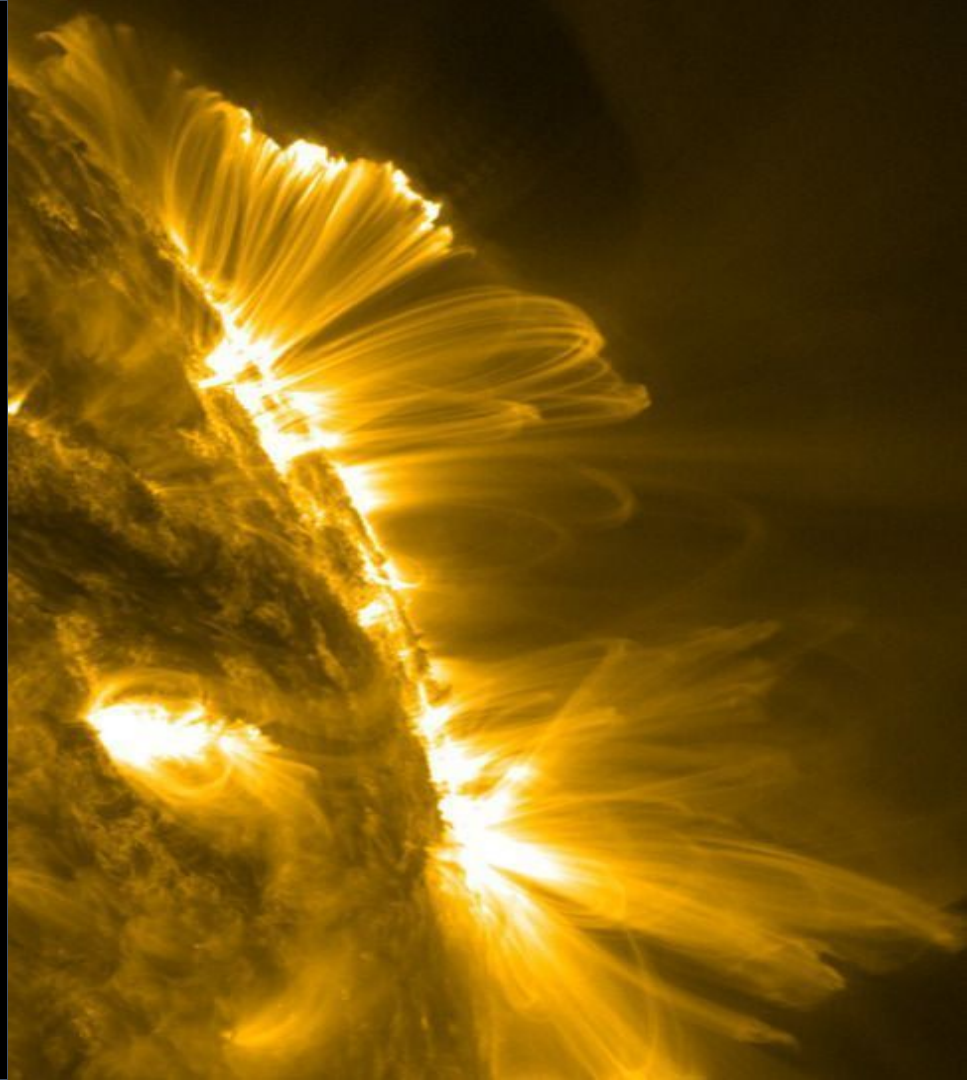
**BASE**

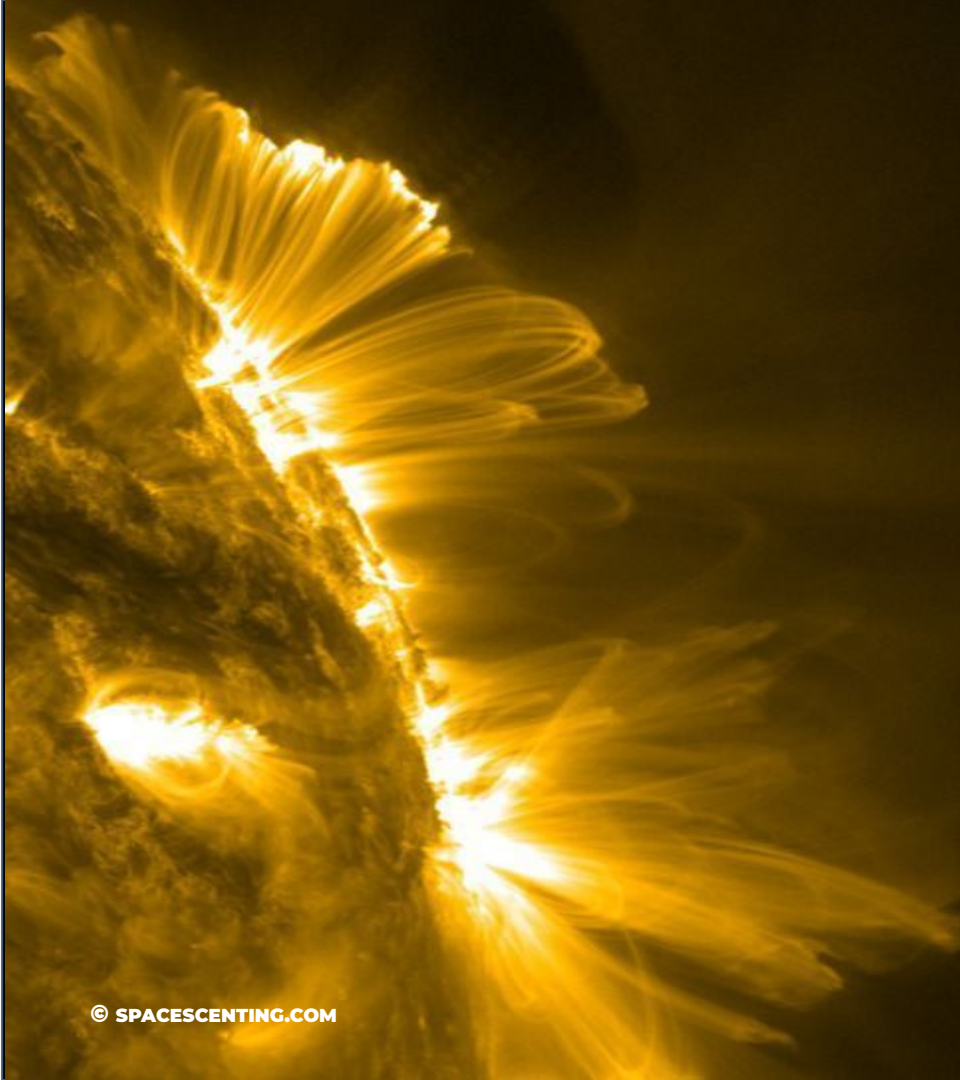
Amber, Musk, Cedarwood, Moss

## DESCRIPTION

---

Pink pepper, crushed currants and bitter orange invigorate with a gentle supporting foundation of cedarwood and moss.





# GINGER FIELDS

**VITALITY**

**FAMILY**

Citrus Spicy

**TOP**

Ginger, Lemongrass, Lemon

**MIDDLE**

Cardamom, Agrestic, Aldehydic, Green

**BASE**

Musk, Cedar, Woody

## DESCRIPTION

---

Sparkling green tea notes accented with bergamot and lime supported with comforting blond woods and white musk.

# GOOD VIBES

**VITALITY**

**FAMILY**

Citrus Floral

**TOP**

Bergamot, Lemon, Orange,  
Galbanium, Dalmatian Sage

**MIDDLE**

Jasmine, Muguet, Neroli

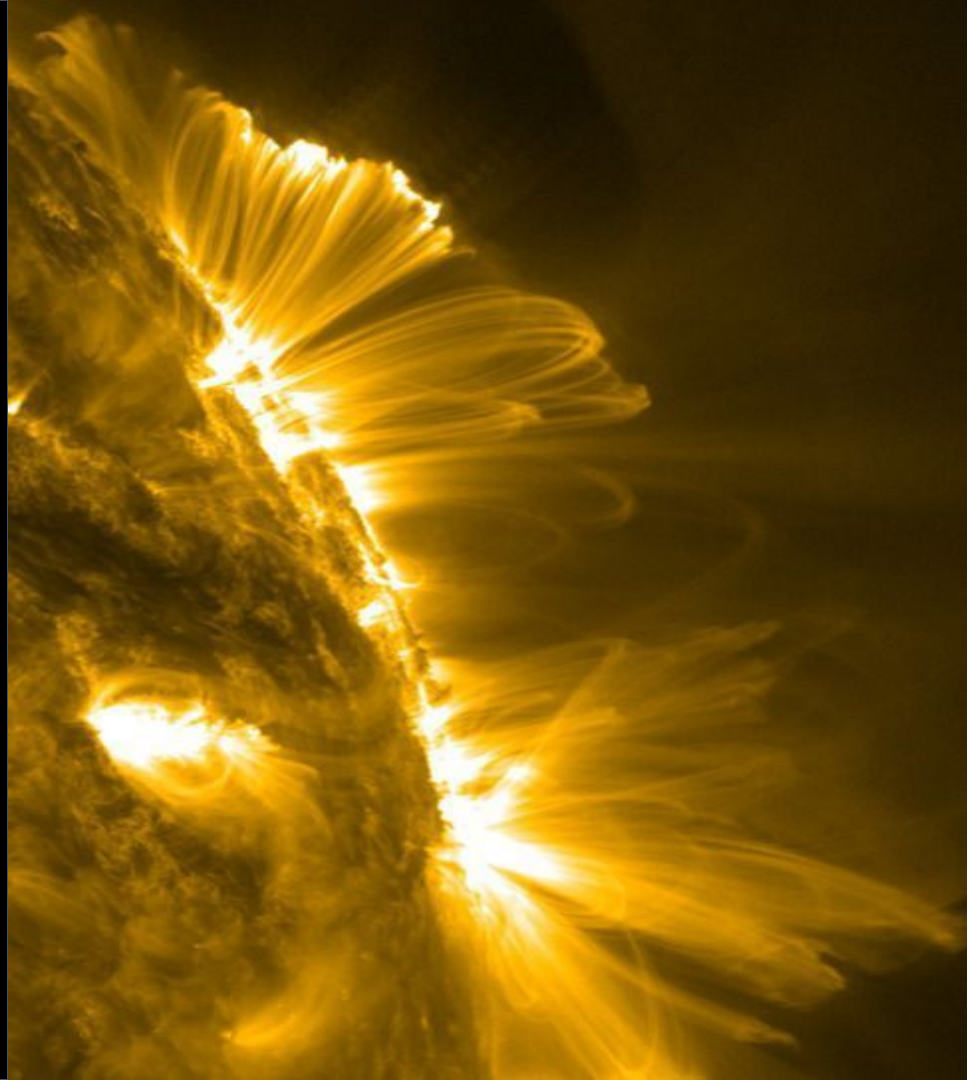
**BASE**

Sandalwood, Oakmoss, Amber, Musk

## DESCRIPTION

---

Dalmation sage and neroli injected with bergamot and orange is rounded out with a base of oakmoss and amber. This is an invitation to adventure!







# LEMON GROVE

**VITALITY**

**FAMILY**

Citrus Spicy

**TOP**

Green Tea, Plum, Lemon, Yuzu,  
Bergamot

**MIDDLE**

Camelia, Magnolia, Green Tea, Jasmine,  
Peony, Mandarin Blossom

**BASE**

Musk, Spice, Moshi, White Birch

## DESCRIPTION

---

Lush plum and yuzu give way to a floral bouquet of mandarin blossom, peony and camellia, over a base of white birch and musk.

# PACIFIC WOODS

**VITALITY**

**FAMILY**  
Oriental

**TOP**

Citrus

**MIDDLE**

Tonka Bean, Jasmine, Violet

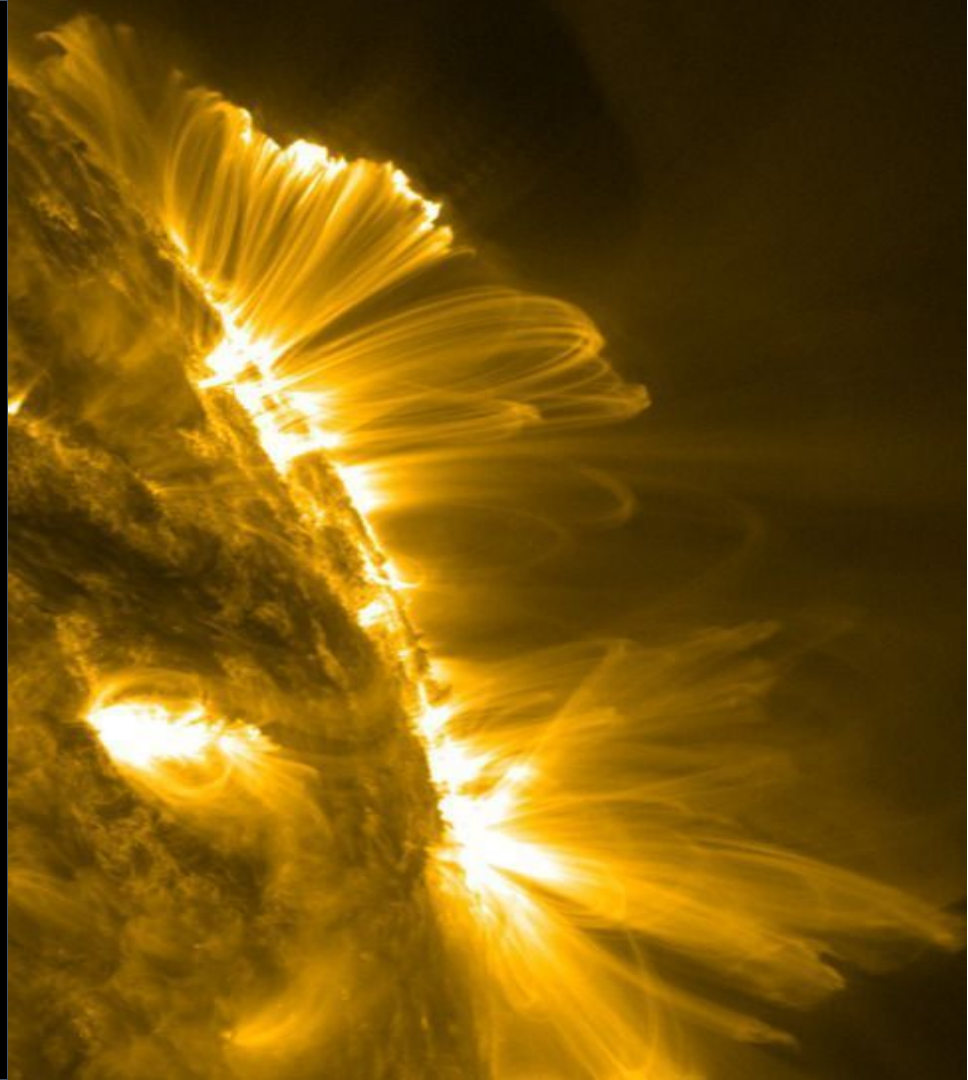
**BASE**

Woods, Amber

## DESCRIPTION

---

Select green herbs, star anise and jasmine shine over a base of precious woods.





# MAKE CONTACT



**SINGAPORE**  
**+65 6253 3819**



[www.spacescenting.com](http://www.spacescenting.com)  
[lab@topmiddlebase.com](mailto:lab@topmiddlebase.com)



**2 Alexandra Road, Delta House #02-04,  
Singapore 159919**